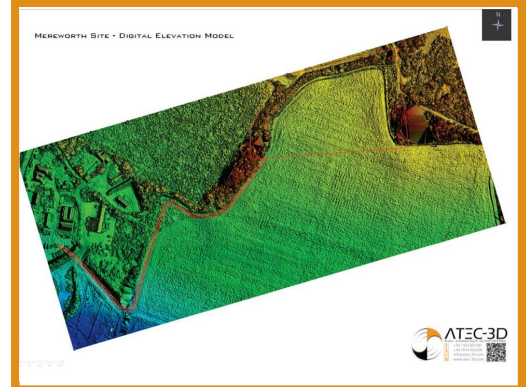
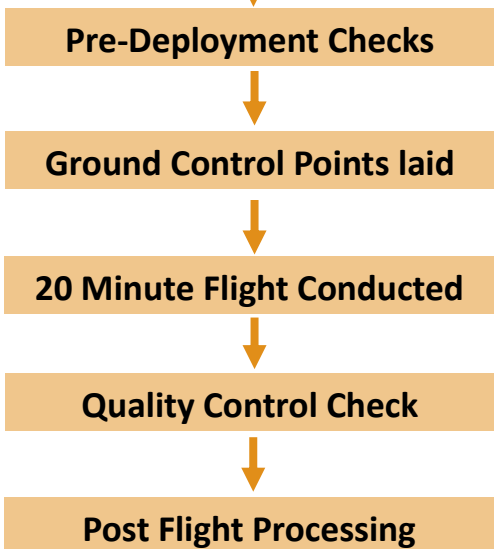


MEREWORTH - CLEAN EARTH ENERGY

The site at Mereworth business centre is owned by Clean Earth Energy Ltd. ATEC-3D were approached by Clean Earth to produce a traditional topographical map with contours and a digital surface model. Also using GIS software a 3m cable connecting the proposed solar farm site to a electricity source.



We were tasked to complete a topographical survey of a small site at Mereworth Business Park, nr. Maidstone, UK. This site is the proposed location for a new solar development for renewable energy therefore surface topography is key as favorable locations are South Facing, to maximise the sunlight hours that the panels receive. Therefore a digital elevation model was created to prove that the slope is south facing thus maximising sunlight and minimising shade between panels. ATEC were contacted about the job midweek and the survey was panned in for the following Friday. The small flight to 25 minutes to complete. Upon returning, the data was processed and edited to the clients needs and was sent out on Saturday morning. From being contacted about the job to completion the total time to was 4 days, to carry out a comprehensive topographic model.



ATEC-3D